

# Playing Printed Textbook Instructional Videos

## Configuration Instructions

*for*

### Adobe Flash

*Updated September, 2016*

The printed version of our optional instructional videos comes in Adobe Flash format on a CD. These videos will play in any major web browser that has Adobe Flash installed.

On **September 13, 2016**, Adobe released **version 23** of the Flash player software. This update changed some default security settings that will **prevent playback** of some videos from a local CD or hard drive. If you experience a “**Connection Error**” or a “**Loading...**” message or an **endless spinning circle** during some parts of a video, please carefully follow these instructions to resolve the issue.

*Note: Students using our online courses will receive streaming videos in MP4 format through their web browser. These instructions do not apply to that format, and there are no known playback issues with the MP4 videos.*

The specific steps you will take to fix the Adobe Flash configuration depend on your operating system and web browser. Please locate the instructions below that match your browser and OS.

### Table of Contents

Internet Explorer, Microsoft Edge, Mozilla Firefox and Opera (for Windows Computers).....	2
Safari Browsers (for Mac OS X Computers) .....	4
Google Chrome (both Windows and Mac OS).....	7

## Internet Explorer, Microsoft Edge, Mozilla Firefox and Opera (for Windows Computers)

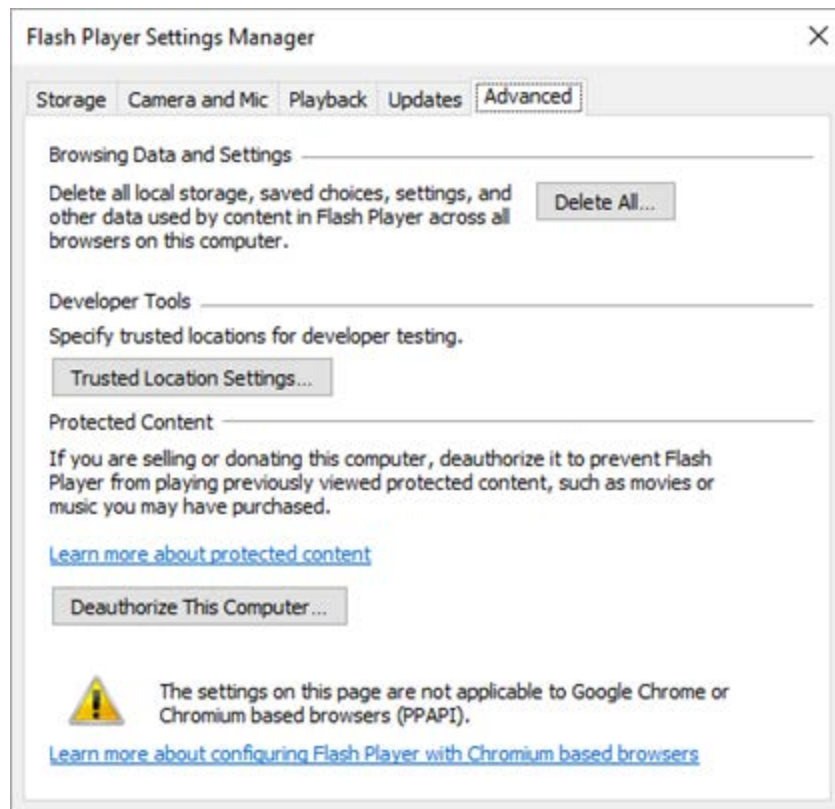
To correct the Adobe Flash settings for Windows web browsers (excluding Google Chrome), you will access the “**Flash Player Settings Manager**” from your Windows Control Panel.

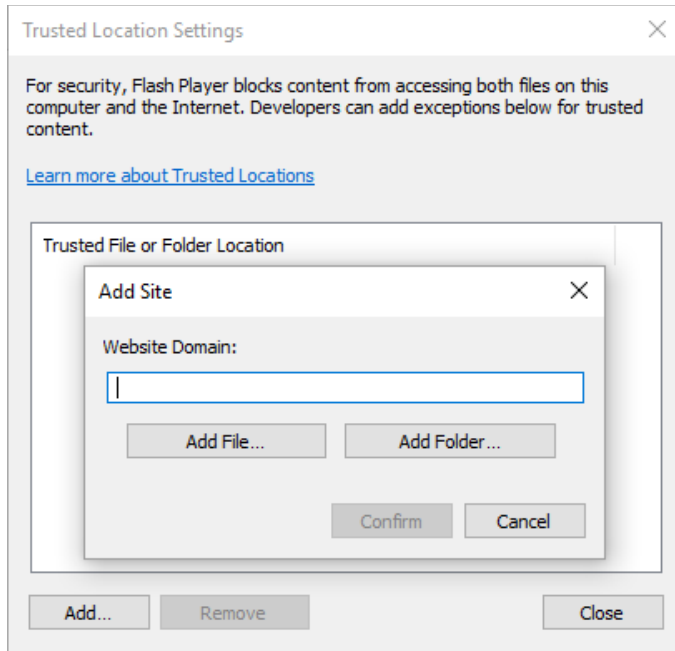
On **Windows 10 or 8**, for example, click on the “Start” menu and select “**Settings**”. Then in the “**Find a Setting**” box in the top right, type “**Flash**” and select the “**Flash Player**” result.



**Windows 7** and earlier users can access the Control Panel directly from the Start Menu and locate the Flash Player icon.

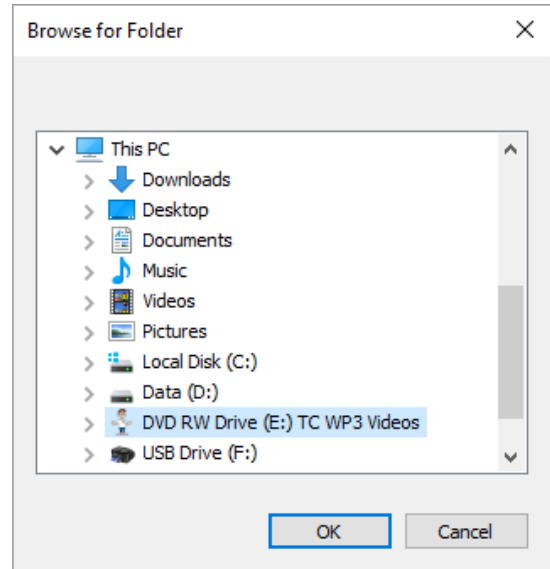
Once you have launched the **Flash Player Settings Manager**, you will need to click on the “**Advanced**” tab at the top of the screen to show the relevant settings.



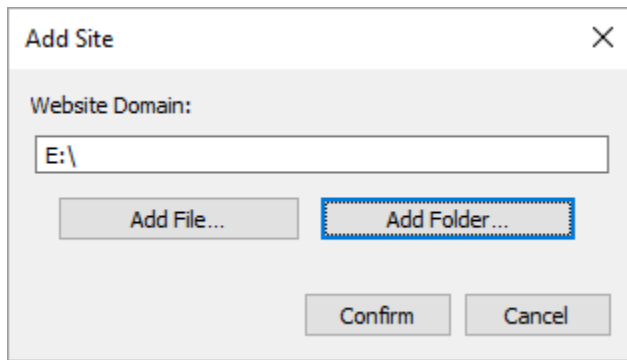


Next, click on “**Trusted Location Settings...**” and then the “**Add...**” button on the next screen.

Then, click “**Add Folder...**” and select your CD or DVD drive from the list. Click “**OK**” when finished.



You should see the path to your CD or DVD drive in the “Add Site” textbox. In our example the path is “E:\” but yours may be “D:\” or similar.

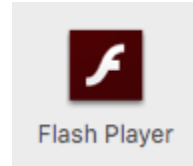


Click the “**Confirm**” button and then “**Close**” button. You can then close the Flash Player Settings Manager.

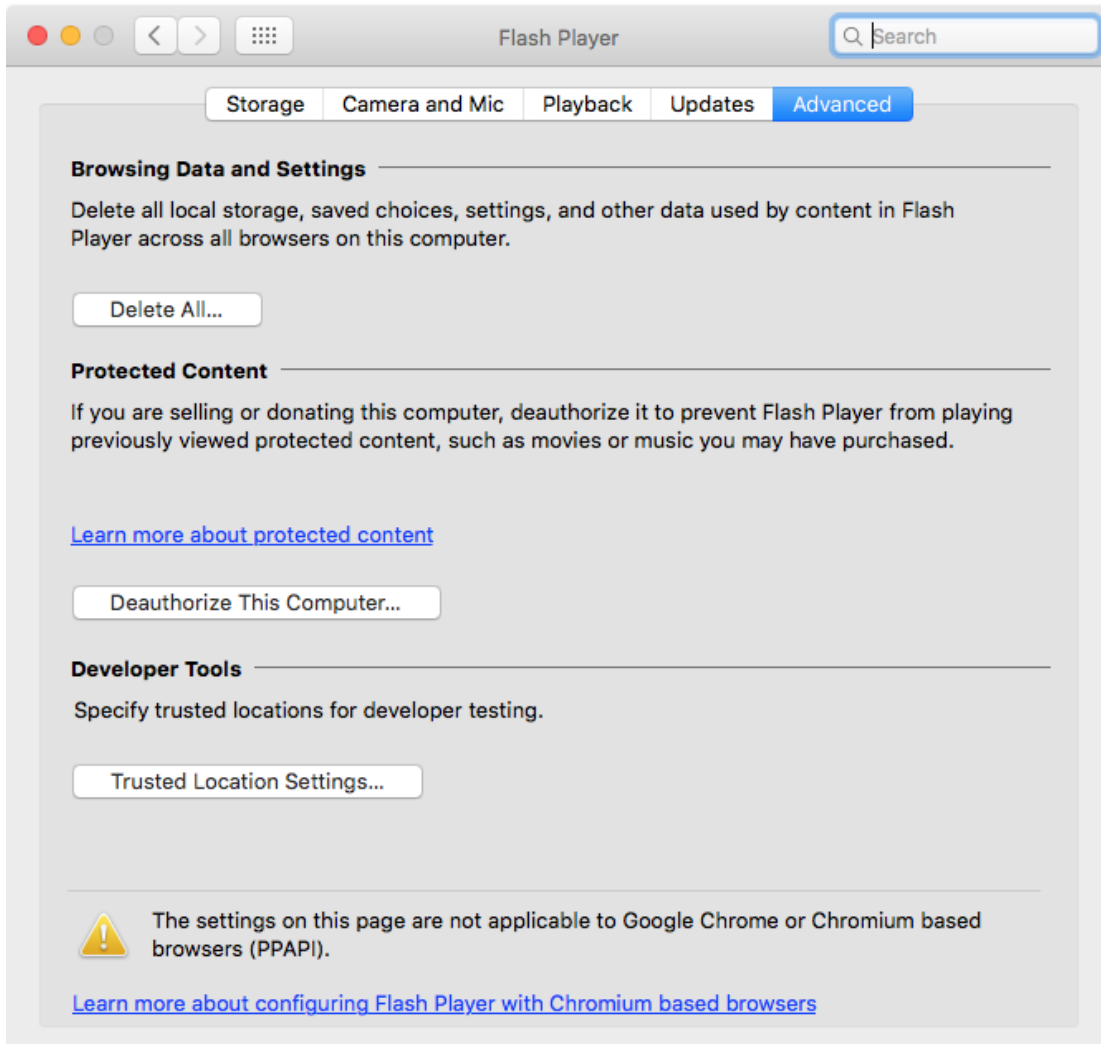
Please close all of your web browsers. You should now be able to return to your Instructional Videos disc, run the menu, and view the videos successfully. If you have any additional problems, please visit the “Help with Videos” page at our website for guidance on more browser-specific settings that can be changed.

## Safari Browsers (for Mac OS X Computers)

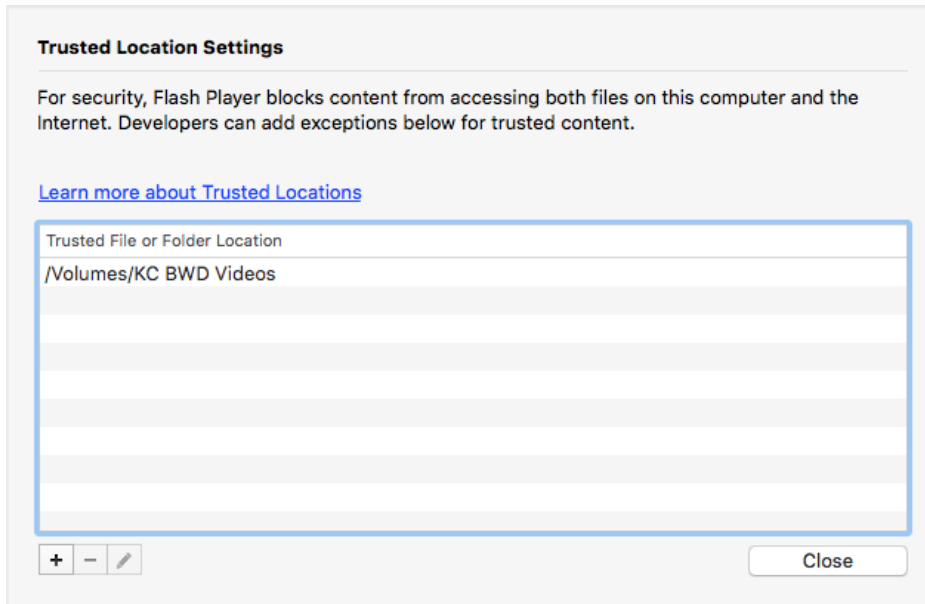
To correct the Adobe Flash settings for your Safari Browser on Mac OS, you will access the “**Flash Player**” from your Mac OS **System Preferences**. The “**Flash**” icon is typically found near the bottom of the System Preferences.



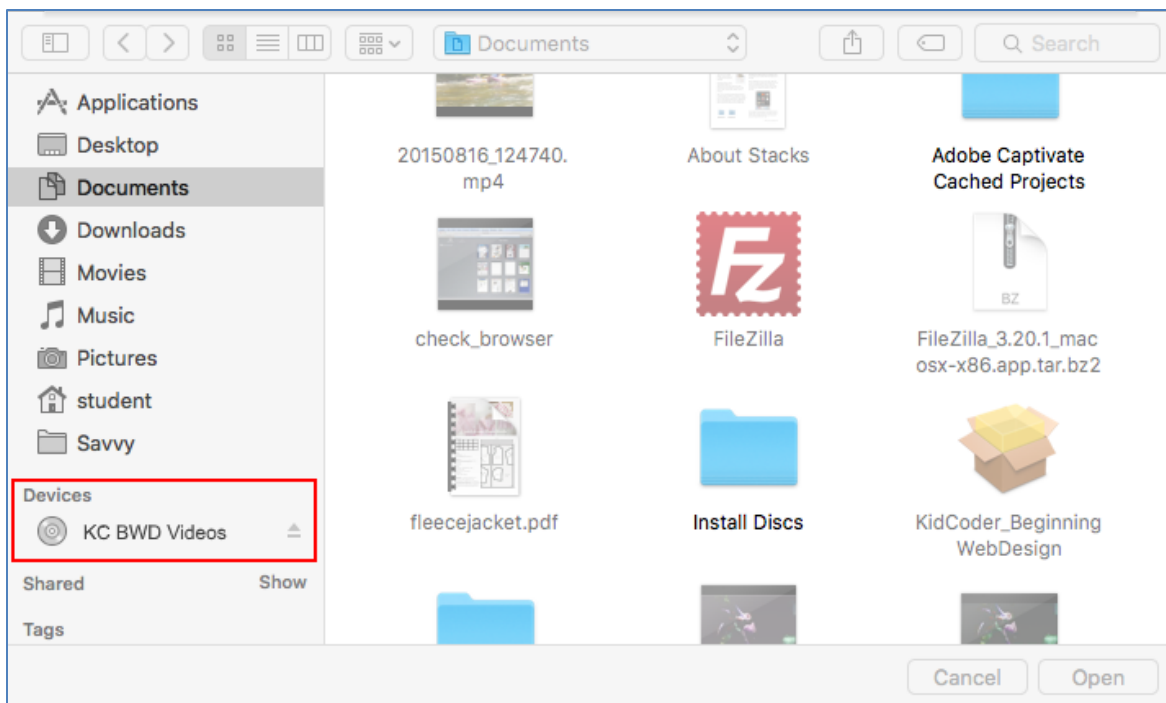
Once you have launched the **Flash Player Settings Manager**, you will need to click on the “**Advanced**” tab at the top of the screen:



Next, click on the “**Trusted Location Settings...**” button.



Now you will need to click on the “**+**” button in the bottom left corner of the screen. This will bring up the file and folder window, seen below:



You should see the path to your CD or DVD drive under the “**Devices**” heading. If you do not see the CD drive, you may need to insert your video CD into your computer. In our example the CD name is “KC BWD Videos”, but your CD may have a different course title.

Click the “**Open**” button and then “**Close**” button. You can then close the Flash Player Settings Manager.

Mac Safari users may **still need to adjust Safari security settings** to allow the Flash plug-in to access the local CD successfully. Please review and follow the instructions on our **Safari help page**:

[http://www.homeschoolprogramming.com/support/videos\\_help\\_safari.php](http://www.homeschoolprogramming.com/support/videos_help_safari.php)

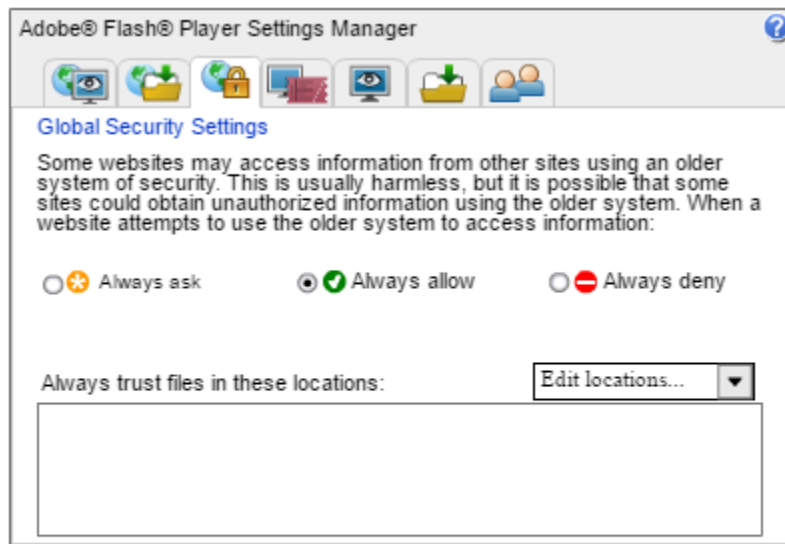
Once you have completed the Adobe Flash Player settings and the Safari Flash plug-in security adjustments, you should be able to return to your Instructional Videos disc, run the menu, and view the videos successfully.

## Google Chrome (both Windows and Mac OS)

If you are running Google Chrome on either the Mac OS X or Windows, the instructions are a little bit different. You will need to set your Flash options on the Adobe website. From your Chrome browser, visit the following link:

[Click Here to Manage Your Chrome Flash Settings](#)

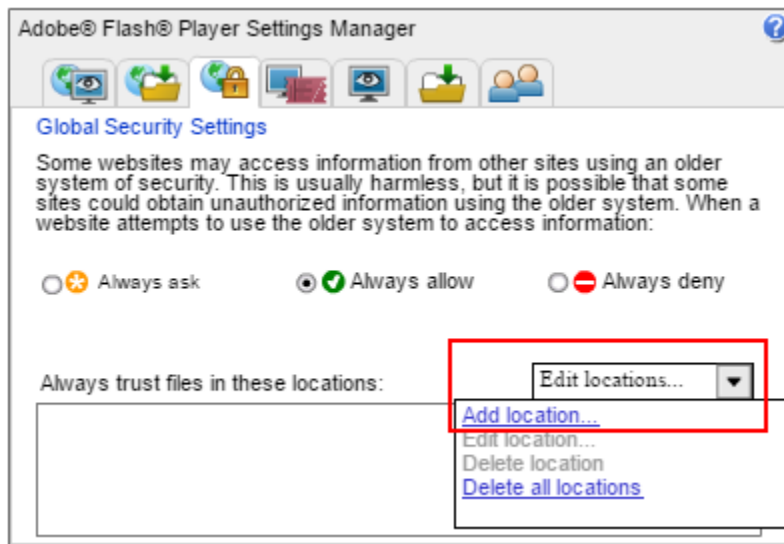
Once you go to this website, you will the following settings panel:



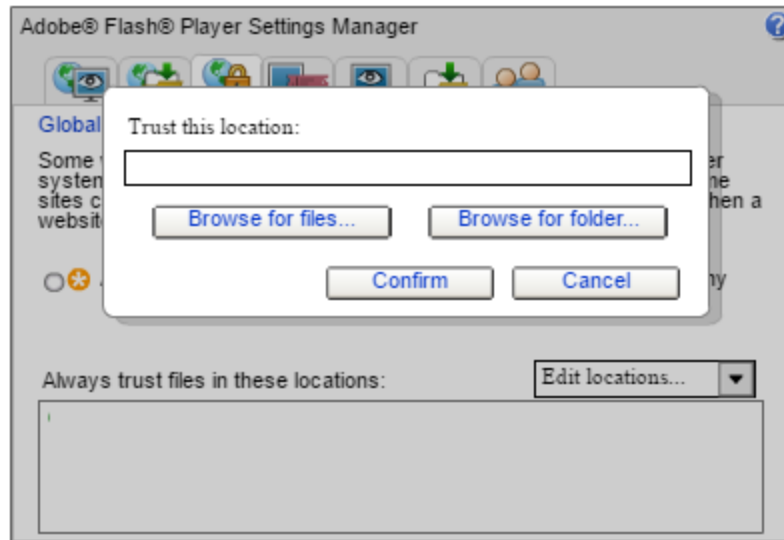
**Note:** The Settings Manager that you see above is not an image; it is the actual Settings Manager itself. Click the tabs to see different panels, and click the options in the panels to change your Adobe Flash Player settings.

This panel will control the actual settings for your Flash program in your Chrome browser!

To add your CD drive as a “trusted location”, click on the “**Edit Locations**” box and then choose “**Add Location...**” from the menu:



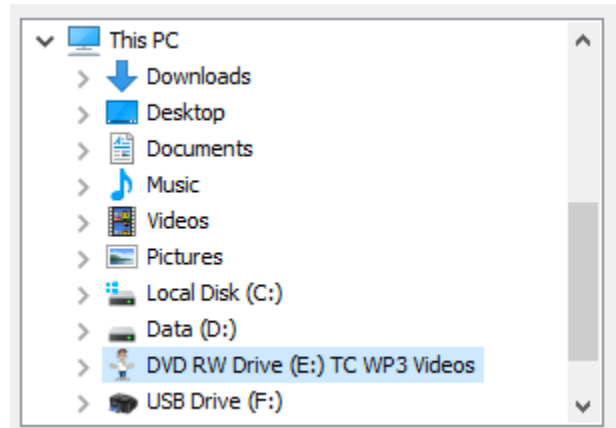
Next you will see the following screen:



Note that the “Browse for files” and “Browse for folder” buttons **do not work properly!** This is a bug in the Adobe software and they are working to correct the issue. For now, you will need to **type in or copy and paste the path** for your CD drive into the text box under the words “**Trust this location:**”. The next page shows you how to identify your CD path.

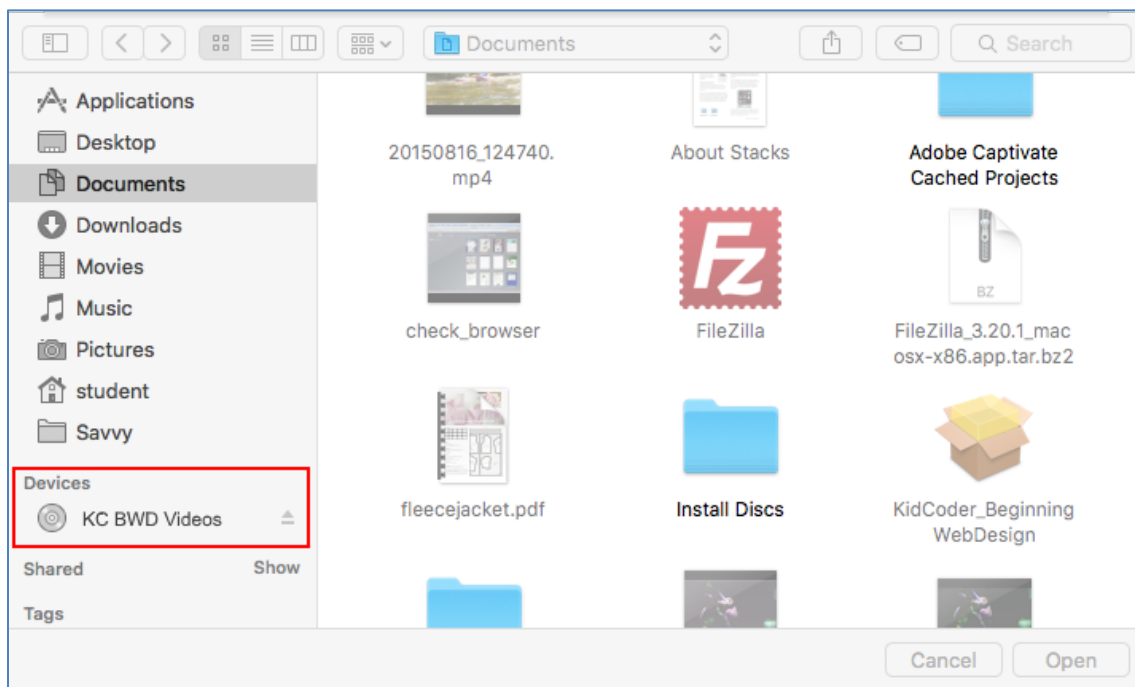


You should be able to find the path to your CD or DVD drive using either Windows File Explorer or Mac Finder. The image to the right shows a Windows File Explorer screen. In our example the path is “E:\” but yours may be “D:\” or similar.



On a Mac computer, you want to look in Finder for your CD or DVD drive listed in the **Devices** section. In the path text box, you will need to enter “/Volumes/” and then your Device name.

For example, in the image below, the CD Device name is “KC BWD Videos”. In the path text box, we would enter “/Volumes/KC BWD Videos”.



Click “**Confirm**” when you have typed in the correct path. Then close all of your web browsers. You should now be able to return to your Instructional Videos disc, run the menu, and view the videos successfully. If you have any additional problems, please visit the “Help with Videos” page at our website for guidance on more browser-specific settings that can be changed.