

Download and Installation Instructions

for

Eclipse Kepler Software for Windows

Updated October, 2014

The *TeenCoder™: Java Programming 2nd Edition* and *TeenCoder™: Android Programming 2nd Edition* courses use the **Eclipse Kepler** software. This software is a free IDE (Integrated Development Environment).

This document will guide you through the download and installation procedure for setting up the Eclipse software on your computer. This software is required for students in order to complete the course. Teachers who wish to view activity solutions or projects on their own computer are also encouraged to install this software.

Changes to 3rd Party Websites!

3rd parties such as the Eclipse Foundation may change their websites without notice. Your download experience may not match the exact screen shots shown below in minor cosmetic ways. If you encounter significant changes, please contact us for updated instructions.

Copyright Notices:

Eclipse, and related terms are all copyright by the Eclipse Foundation. Please see <http://www.eclipse.org/legal/epl/notice.php> for more details.

This document, *TeenCoder™: Java Programming*, *TeenCoder™: Android Programming* and related terms are copyright by Homeschool Programming, Inc. This document may not be transmitted or reproduced without written permission except under terms of your purchased course license.

Disclaimer:

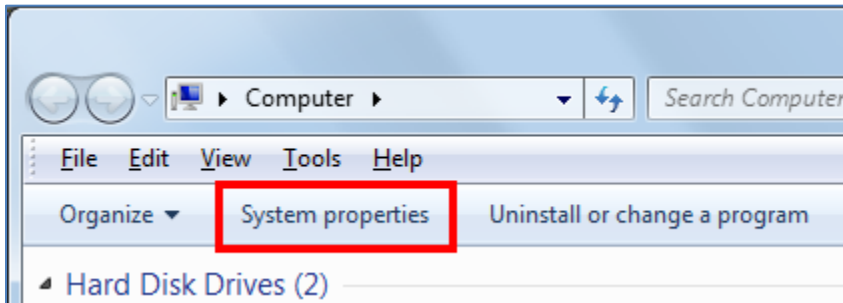
Homeschool Programming, Inc, and their officers and shareholders, assume no liability for damage to personal computers or loss of data residing on personal computers arising due to the use or misuse of this course material. Always follow instructions provided by the manufacturer of 3rd party programs that may be included or referenced by our courses.

Let's Get Started!

All red circles or squares below are added for emphasis and are not present on the actual pages!

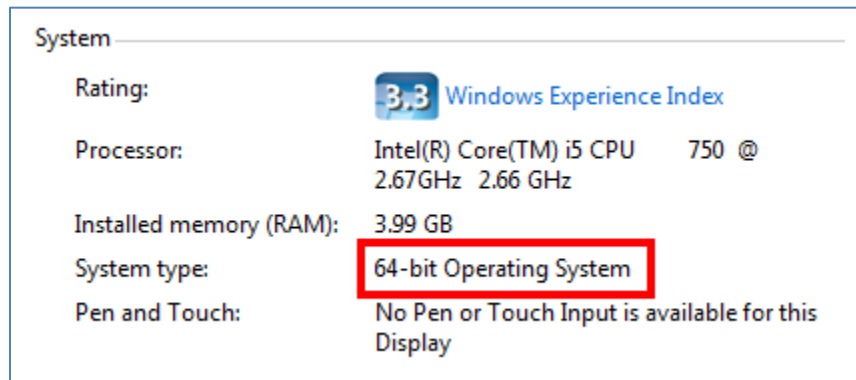
Windows Versions

The Eclipse software has two different versions: a 32-bit Windows version and a 64-bit Windows version. Before you download the software, you will need to know which version of Windows you are using. If you don't already know what version you have, you can find out fairly quickly.



First, click on “Start” and then choose “Computer” from the list of Start Menu items. On the “Computer” screen, click on the button that says “System Properties”.

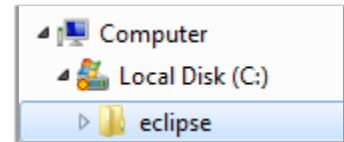
This will bring up a screen with information about your computer and your version of Windows. Look for a section titled “System”. This section will easily tell you what version of Windows you have installed:



Keep this information handy! We will use it to determine which version of Eclipse to download.

Creating Your Eclipse Directory

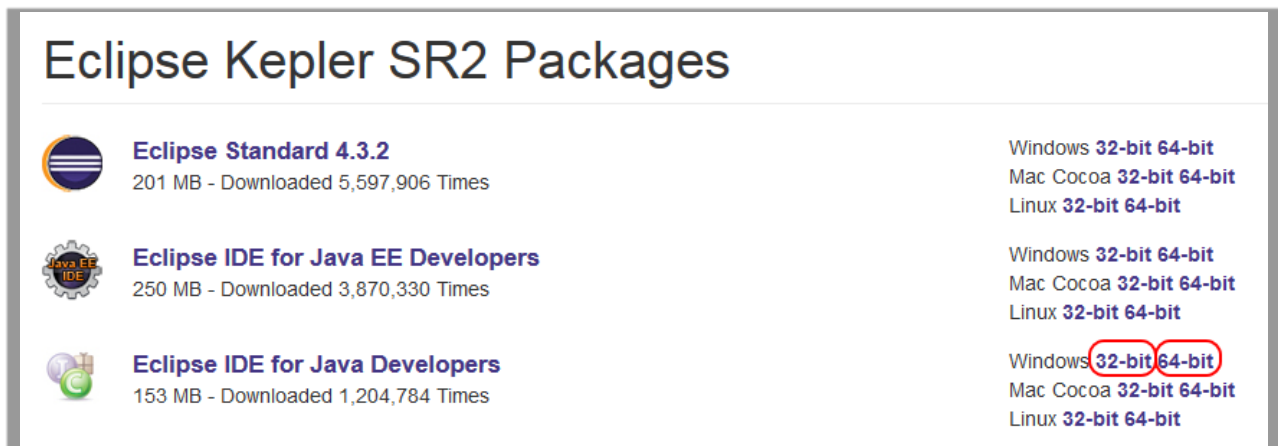
Eclipse comes packaged as a ZIP file. You will first need to create a directory to hold your ZIP file and, eventually, the un-zipped Eclipse components. Use your Windows Explorer program to create a directory for your Eclipse program. We recommend “C:\eclipse” for simplicity.



Downloading Eclipse

We are using **Eclipse “Kepler (4.3)”**. Please follow these instructions carefully to ensure you get the right version! You can use the latest available service release (SR) for Kepler 4.3.

To download *Eclipse Kepler*, launch your web browser (e.g. Internet Explorer) and go to this address: <http://www.eclipse.org/downloads/packages/release/Kepler/SR2>. You will now arrive at the Eclipse Kepler download page, which should contain a section like the following:

A screenshot of the Eclipse Kepler SR2 Packages download page. The title is 'Eclipse Kepler SR2 Packages'. There are three rows of package information. The first row is 'Eclipse Standard 4.3.2' (201 MB, 5,597,906 downloads) with links for Windows (32-bit, 64-bit), Mac Cocoa (32-bit, 64-bit), and Linux (32-bit, 64-bit). The second row is 'Eclipse IDE for Java EE Developers' (250 MB, 3,870,330 downloads) with links for Windows (32-bit, 64-bit), Mac Cocoa (32-bit, 64-bit), and Linux (32-bit, 64-bit). The third row is 'Eclipse IDE for Java Developers' (153 MB, 1,204,784 downloads) with links for Windows (32-bit, 64-bit), Mac Cocoa (32-bit, 64-bit), and Linux (32-bit, 64-bit). The '32-bit' and '64-bit' links for the third row are circled in red.

To the right of the “Eclipse IDE for Java Developers” line, select either the “32-bit” or “64-bit” link to match your version of Windows.


Be sure you do NOT accidentally select the “Java EE” version!


When you choose your version of Windows, a new screen will appear with links to download Eclipse:

Eclipse downloads - mirror selection

All downloads are provided under the terms and conditions of the [Eclipse Foundation Software User Agreement](#) unless otherwise specified.

Download eclipse-java-kepler-R-win32-x86_64.zip from:

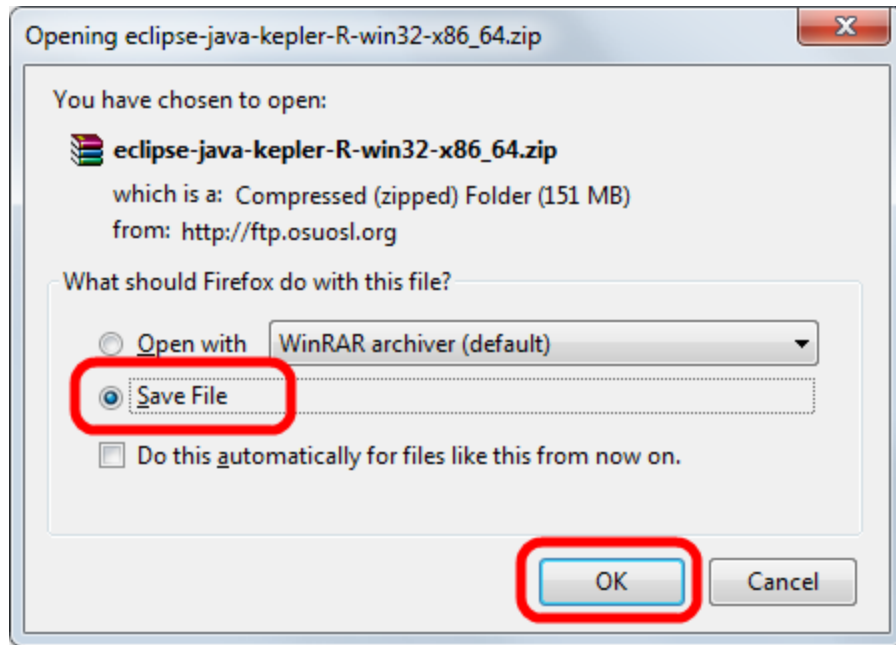
 [\[United States\] OSU Open Source Lab \(http\)](#)

Checksums: [\[MD5\]](#) [\[SHA1\]](#)  [BitTorrent](#)

...or pick a mirror site below.

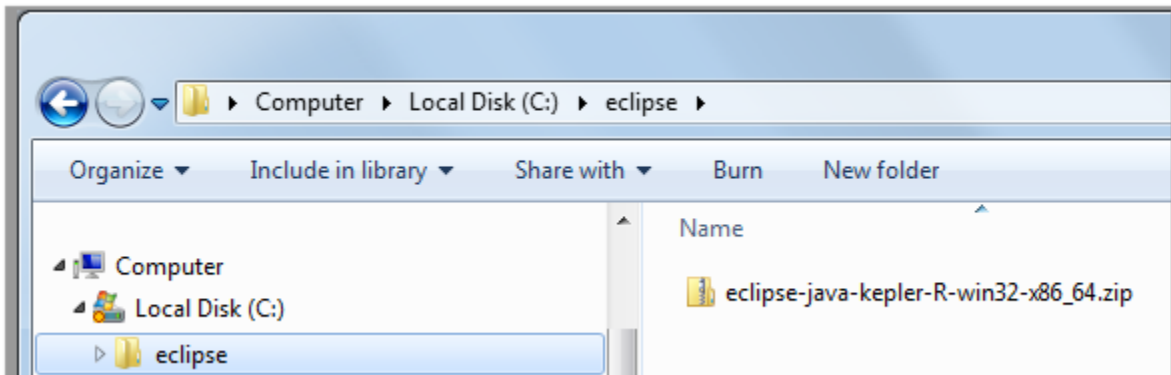
You can just click on the green down arrow to begin your download from the recommended server. Other optional download sites below this choice are referred to as “mirror” sites. These are sites that may be closer to your location, or have a faster connection than the default site. Any site you choose will download the exact same software files. Our advice is to choose the default Eclipse download site, unless you are having difficulty downloading the file. Then you can choose any “mirror” site to download the file.

Once you choose to download the file, you will be given a choice to save the Eclipse install file. The appearance of this “Save” window will change depending on what Internet browser you are using. The following is a screenshot of the “Save” choice in Mozilla Firefox:

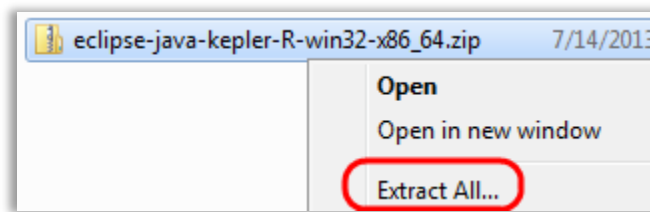


The screen will look similar for Internet Explorer, Chrome, or any other Internet browser software.

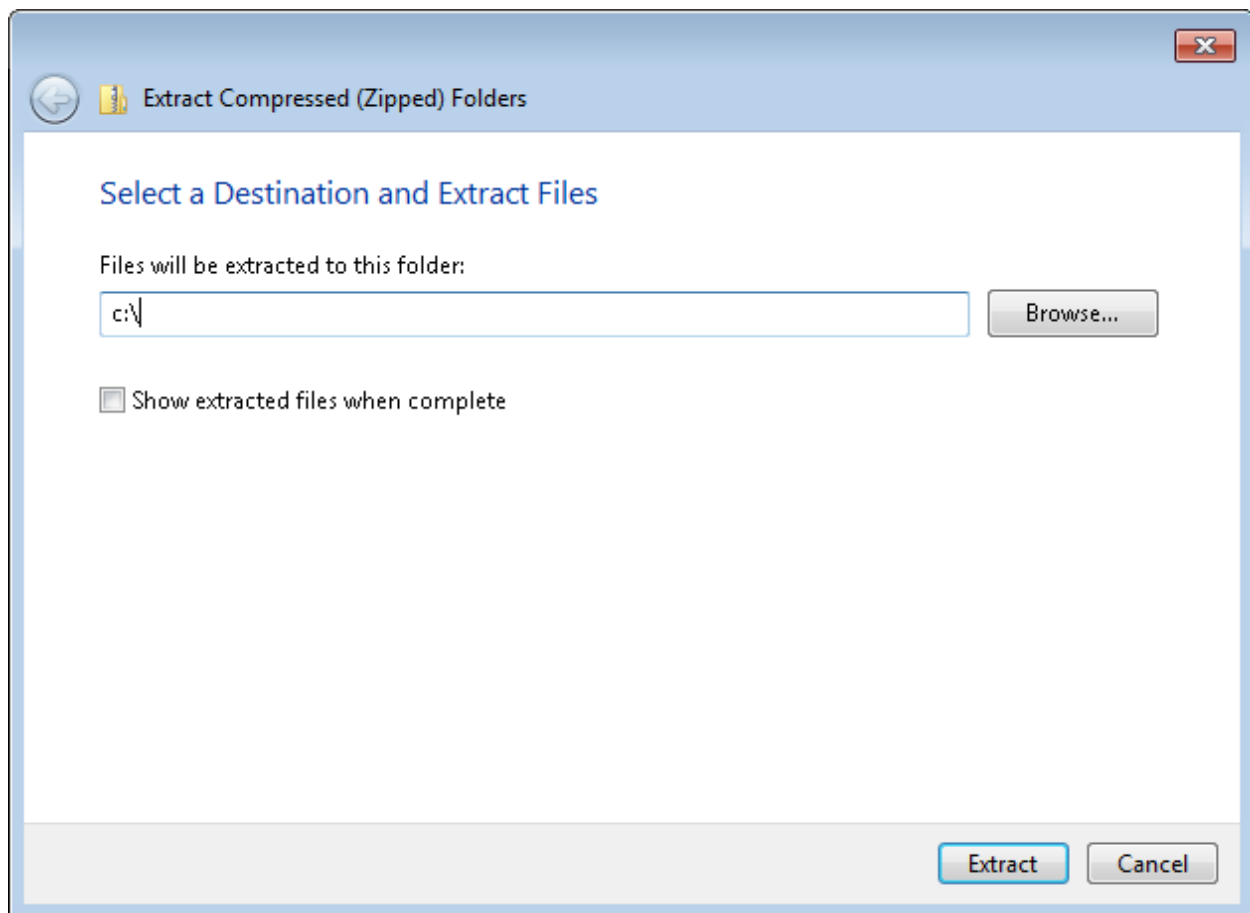
Select "Save File" or "Save" to save the file to a location on your local hard drive. You can save it to your Desktop or any other file folder such as "C:\eclipse". Remember this location so you can find it later! We recommend saving the file to "C:\Eclipse" because that's where we want to un-zip the contents.



Once your file is downloaded, open the Windows Explorer and find the file on your hard drive. Windows 7 or greater users can “un-zip” the file by right-clicking on it and choosing “Extract Files”.

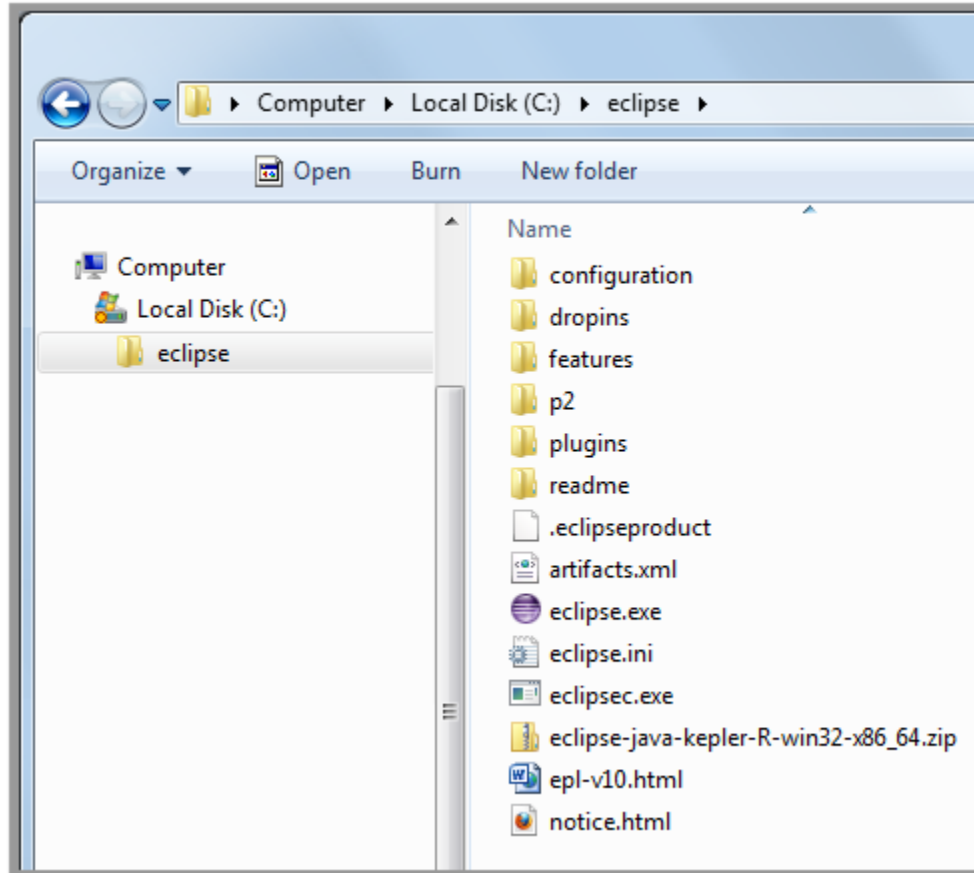


Windows will then ask you where you want to extract the zip files. We recommend unzipping directly into the “C:\” folder. The ZIP file internally contains the “eclipse” root directory, so unzipping to “C:\” will put all files into the “C\eclipse” folder.



Older versions of Windows may require a free or shareware 3rd party utility such as WinZip, WinRAR, or 7Zip to expand the ZIP package.

Once the zip file is extracted, you will end up with a “c:\eclipse” directory that looks like this:



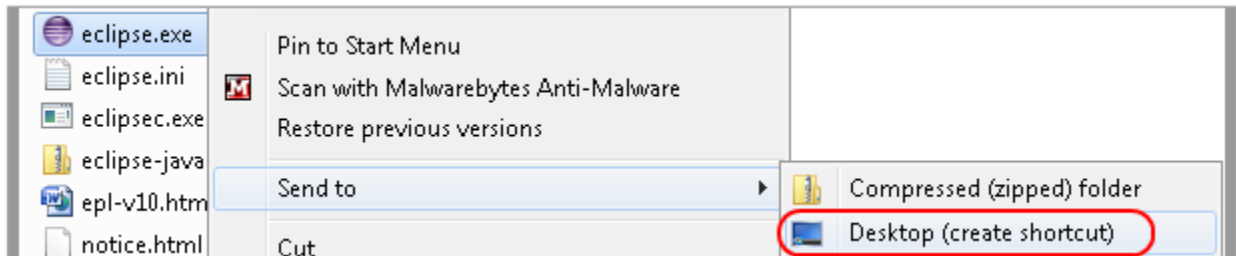
Congratulations! You have completed the installation for the Eclipse Kepler software! You’ll notice that we never had to run an “Install” program to actually install the software. This is because the Eclipse directory contains all the necessary configurations internally. It does not need to set any Windows registry values or install any libraries. It will run right from the Eclipse directory.

This also makes it easy to un-install the Eclipse software. Instead of using the Control Panel to “Add/Remove Programs” or manage “Programs and Features”, you can just delete the entire Eclipse directory.

Configuring Eclipse

There are two final steps to making Eclipse work best for this course. The first step is optional – we will create a “Shortcut” for the Eclipse software on your desktop. This will make it easy to find and launch the software when necessary.

Creating a desktop shortcut is easy. Just right-click on the “eclipse.exe” file from Windows Explorer and choose the “Send To” option and then “Desktop (create shortcut)”:

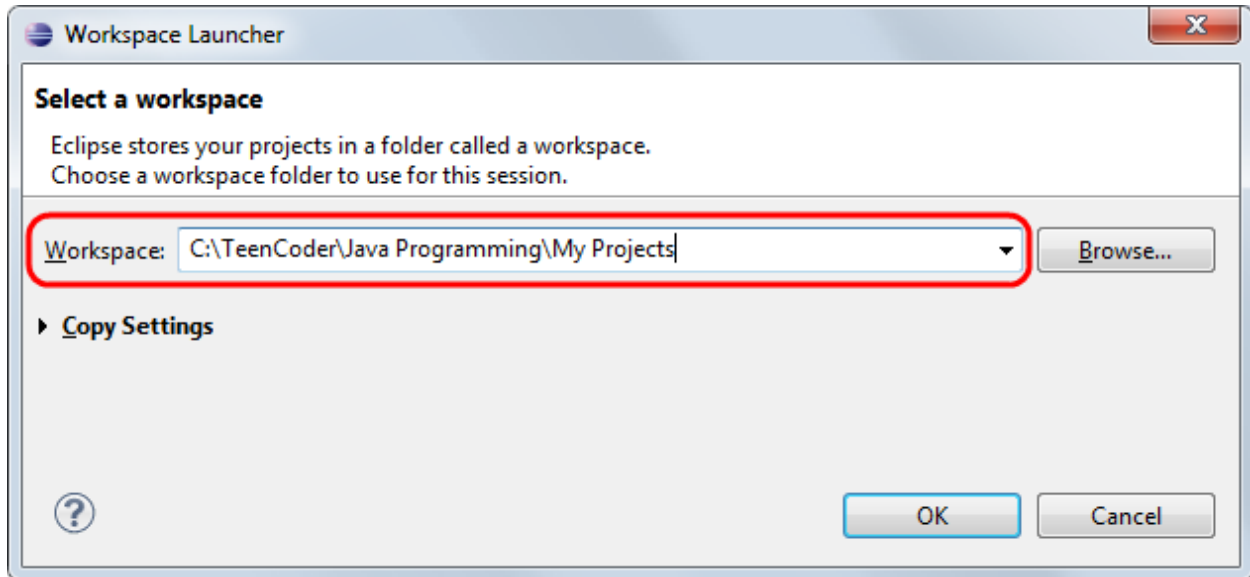


This will place the Eclipse icon on your desktop and allow you to launch the software just by double-clicking the image!



The final step in the configuration process is to run the software and set up the default “Workspace” for your projects. The Workspace is a directory on your hard drive where your programs will be stored. We recommend using either “C:\TeenCoder\Java Programming\My Projects” or “C:\TeenCoder\Android Programming\My Projects”, but you can use another directory location if you prefer.

The first time you start the Eclipse software, you will see the following screen:



Here, you can type in or browse to your preferred workspace directory. We have demonstrated “C:\TeenCoder\Java Programming\My Projects” above. Once you have a directory chosen, you may click on the box labeled “Use this as the default and do not ask again” if you don’t want to see this prompt each time you launch Eclipse. Then click on OK, and your Eclipse workspace is set!