

Eclipse Configuration Instructions

Updated April, 2017

The instructions in this document will show you how to configure your Eclipse environment for the best results. Configuration tasks will take place within the Eclipse software, so please launch it now.

If your experience does not match these instructions, please contact us for updates.

Changing the Curly Brace Format

Java code is filled with opening and closing curly braces “{“ and “}” that define blocks of code. There are two main styles generally used when it comes to placing your curly braces. We use a style where curly braces are carefully aligned with each other vertically. Each opening curly brace had a corresponding closing brace directly underneath. For example:

```
public static void main(String[] args) // main entry point
{
    System.out.println("Hello, World"); // a program statement!
}
```

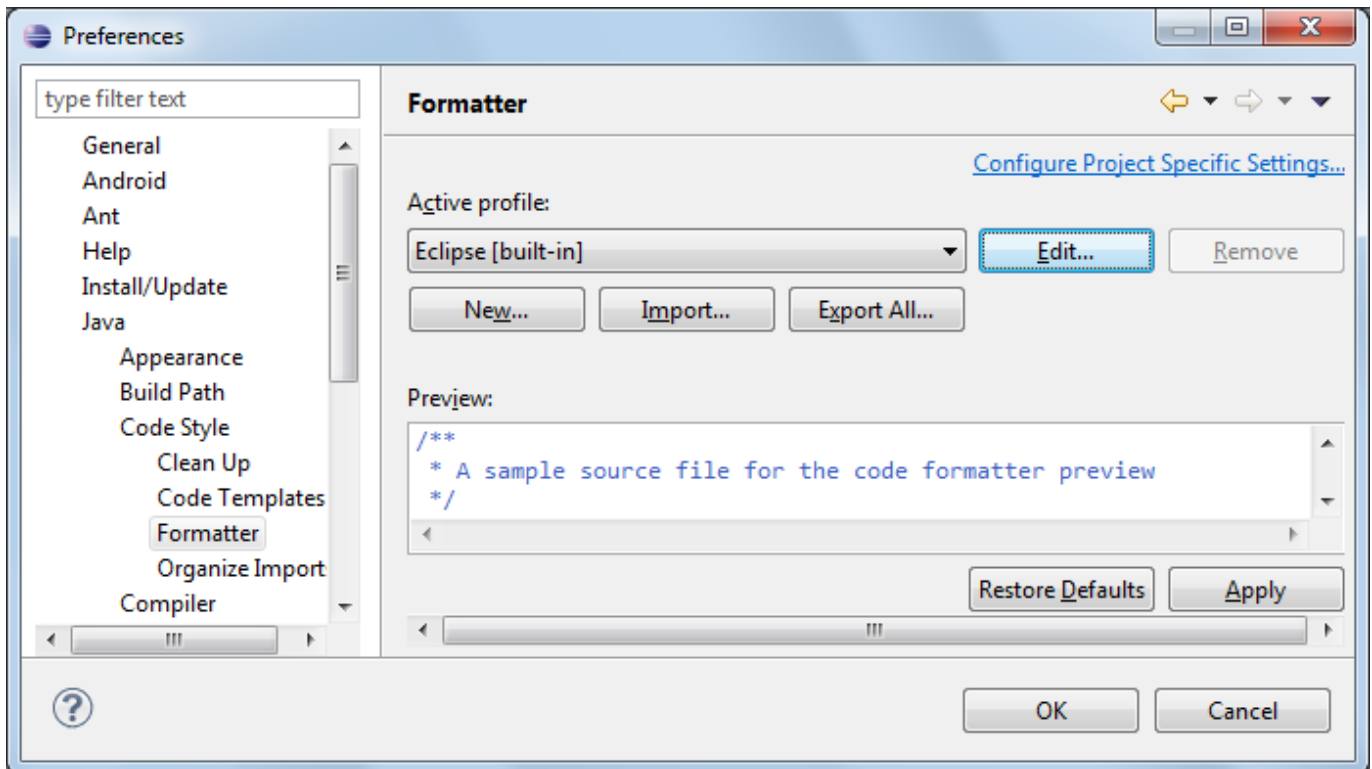
We recommend you also use this style for your own programs. We believe this makes your code easier to read and easier to identify matching sets of braces.

The second style (and the Eclipse default) will place the opening curly brace at the end of the previous line. This second style is actually quite popular among the original Java programmers and many still use this style today. So if you are looking at someone else’s code and you see this second style, don’t let it confuse you.

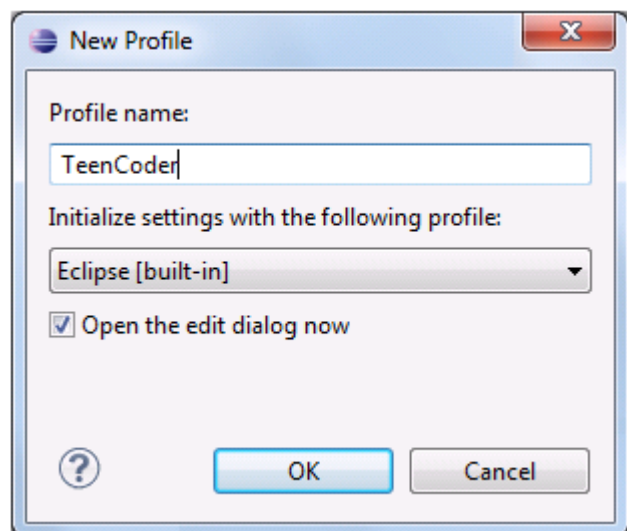
```
public static void main(String[] args) {
    System.out.println("Hello, World"); // a program statement!
}
```

We recommend you change the default Eclipse configuration to use vertically aligned braces. This will take some detailed changes in your Preferences, but the results are worth it.

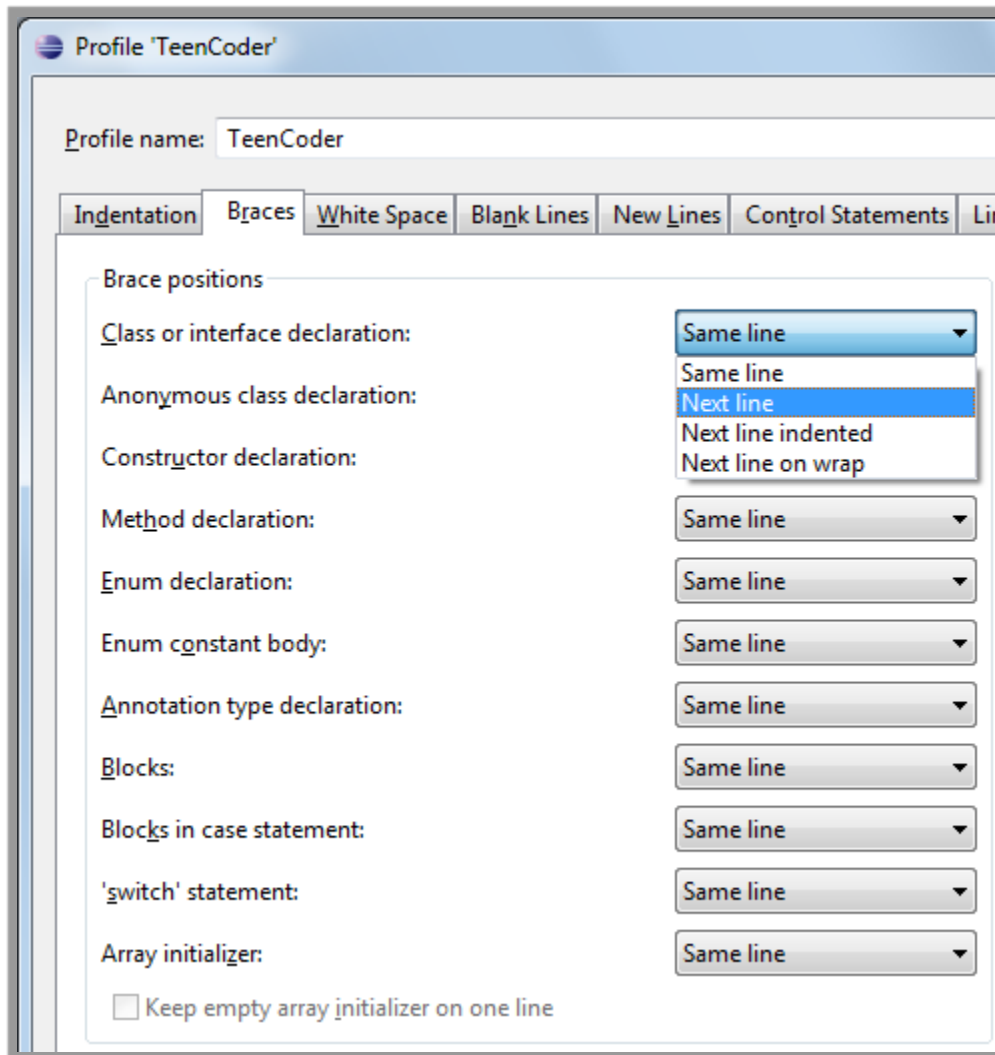
To begin, select “Window → Preferences” from the menu just like the previous section. Then on the left tree, drill down to “Java → Code Style → Formatter”.



Click on the “New...” button underneath the **Active profile** area. You will get a pop-up asking for your new profile name. This profile will hold all of the changes we want to make that change the formatting behavior of Eclipse! Enter “TeenCoder” for the **Profile name** and then click the “OK” button.



You will then see a large window that will let you change many formatting styles. You can explore your other options if you wish, but for now we want to change just the curly brace alignment. So click on the “Braces” tab which is second from the left.

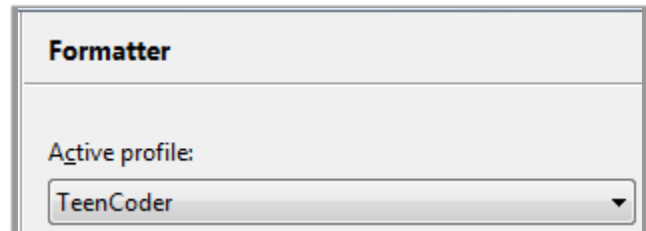


Along the left side you see a “Brace positions” group of combo boxes. Change every one of them (except the last “Array initializer” from “Same line” to “Next line”).

On the right side of this window (not shown) you can see a live example source file that automatically changes as you switch each combo box. This helps you visualize the changes you are making to the formatting style.

When you are done click on the “OK” button at the bottom.

After clicking “OK” you will return to your Preferences screen. But notice that your **Active profile** is now “TeenCoder”, and the sample code shown in the “Preview” window has vertically aligned braces in the same column, just the way we like it!



Click the “OK” button again on the Preferences screen to return to the IDE. Whew, that was a bit of a pain, but the results will be worth it! Now, on to your first Eclipse project!

Turning Off Usage Data Collector

Earlier versions of Eclipse contained a “Usage Data Collector” that optionally monitored how you used the IDE and periodically sent feedback to the Eclipse Foundation in hopes of improving the user experience. While this is harmless, it can be distracting to see pop-up windows or dialogs on occasion asking for permission to perform this task.

More recent versions of Eclipse have disabled this feature, but you never know when it may return. If you see a pop-up asking about Usage Data Collection, you can elect to disable or cancel this feature at that time.